



# GAT MONTHLY MEMBERSHIP PROGRESS REPORT

Results as of: 8/31/2022

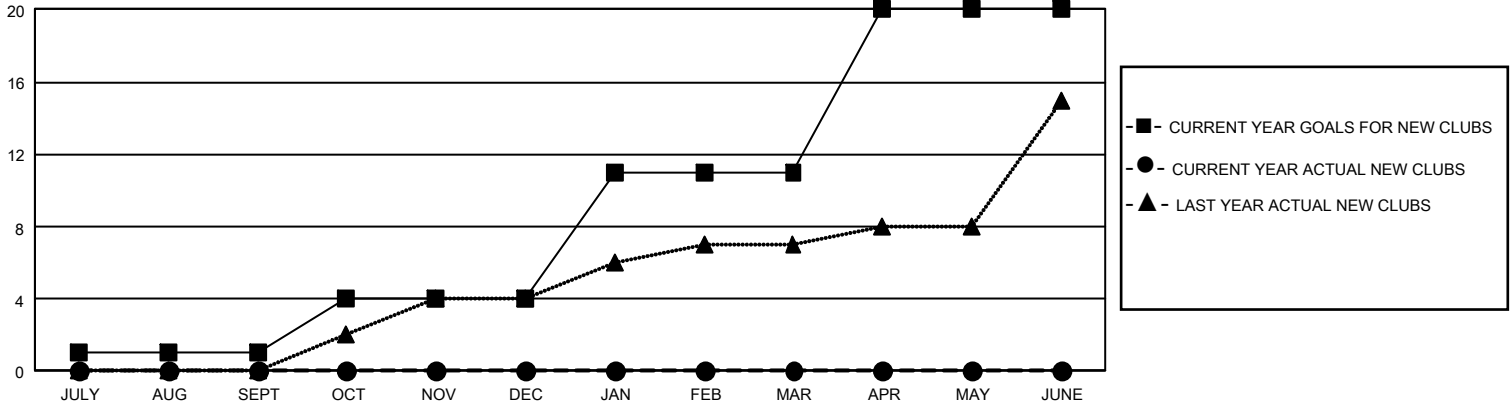
## GMT Constitutional Area 3, Group H

REPORT DOES NOT INCLUDE CLUBS IN UNDISTRICTED AREAS.

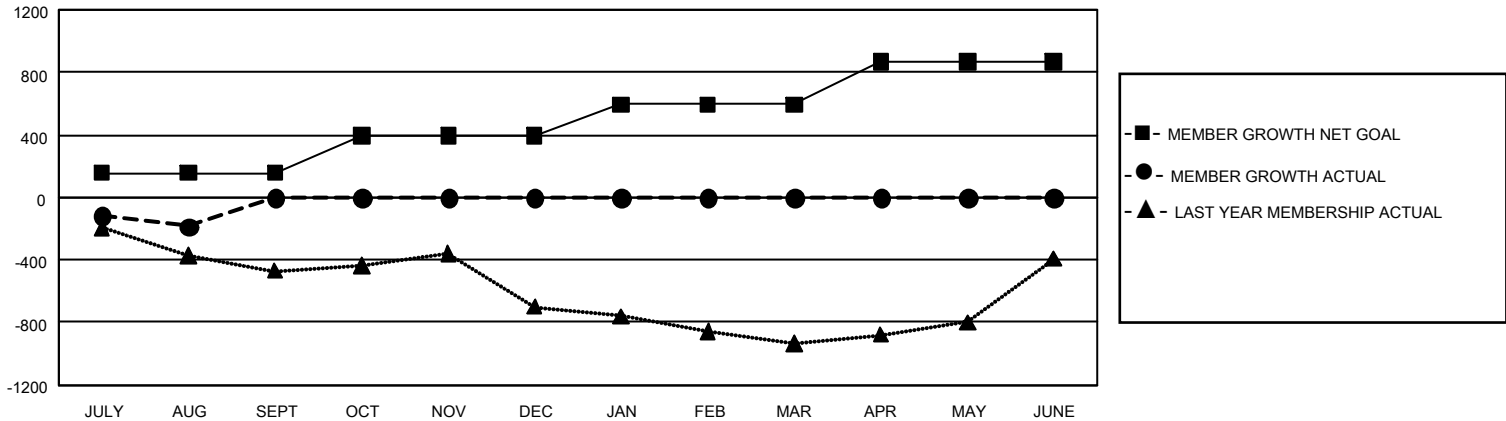
Clubs			
RESULTS FOR 2022-2023			
QUARTER	NEW CLUB GOAL	NEW CLUBS	DROPPED CLUBS
JULY/AUG/SEPT	3	0	2
OCT/NOV/DEC	9	0	0
JAN/FEB/MAR	21	0	0
APR/MAY/JUNE	27	0	0

Members			
RESULTS FOR 2022-2023			
QUARTER	MEMBER GROWTH NET GOAL	MEMBER GROWTH ACTUAL	DROPPED MEMBERS ACTUAL (including transfers)
JULY/AUG/SEPT	155	176	346
OCT/NOV/DEC	240	0	0
JAN/FEB/MAR	200	0	0
APR/MAY/JUNE	275	0	0

GOALS AND ACTUAL NEW CLUBS CUMULATIVE



GOALS AND ACTUAL MEMBERS CUMULATIVE



DROPPED CLUBS: 2	
<b>DROPPED MEMBERS</b>	
DECEASED	20
CLUB CANCELLED	0
OTHER	326
<b>TOTAL</b>	<b>346</b>

71 CLUBS OF 489 ADDED 1 OR MORE NEW MEMBERS

[CLICK HERE FOR CUMULATIVE MEMBERSHIP DATA](#)

GENDER DISTRIBUTION	
MALE	7,266 (49.78%)
FEMALE	7,324 (50.17%)
NON BINARY	0 (0.00%)
PREFER NOT TO ANSWER	7 (0.05%)
TOTAL FAMILY UNIT MEMBERS	7,616
FAMILY MEMBERS PAYING HALF DUES	3,893